

Steven M. Clouse WRC Headworks Enhancements Phase 2 Project

Ila Drzymala, P.E.

Project Engineer

Stella Manzello

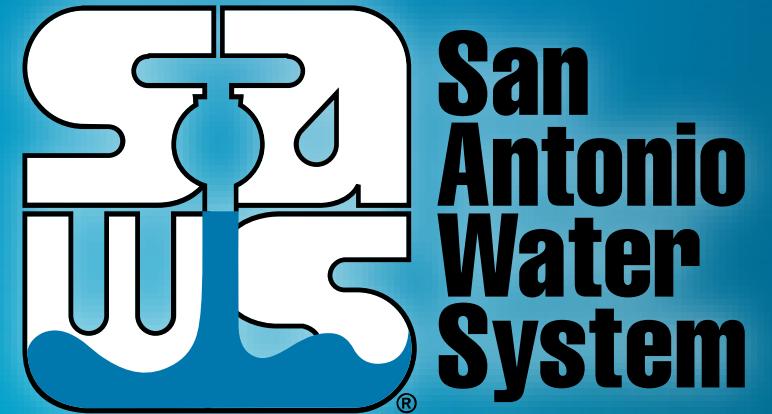
Contract Administrator

Marisol V. Robles

SMWVB Program Manager, SAWS

Javier Garcia, P.E.

Project Engineer of Record, GIC



Non- Mandatory Pre-Bid Meeting

October 18, 2021 – 2:00 PM

MAKING SAN ANTONIO
WATERFUL 

Oral Statements

Oral statements or discussion during the pre-bid meeting today will not be binding, nor will it change or affect the terms or conditions within the Plans and Specifications of this Project. Changes, if any, will be addressed in writing only via an Addendum.

Agenda

- General Information
- SMWVB Requirements
- Contract Solicitation Website – Recent Changes
- Vendor Registration
- Key Reminders
- IFB Schedule
- Bid Packet Preparation
- Contract Requirements
- Project Overview
- Statement of Bidder's Experience
- Special Conditions
- Supplemental Conditions
- Project Details

General Information

- This is a Non-Mandatory pre-bid meeting
- Attendees should sign-in via chat on WebEx
- This presentation and the attendance sheet will be posted to the SAWS website
- Key project information:
 - Construction duration is 500 calendar days
 - Construction estimate \$7,563,000.00
- Construction services being procured through IFB

Aspirational SMWB Goal

Industry	Aspirational SMWB Goal
Construction	20%

The aspirational SMWB goal is 20% of your total bid price.

Accepted SMWB Certification Agency

- **South Central Texas Regional Certification Agency**

(Includes the Texas Historically Underutilized Business “HUB” Program, MBE, WBE, SBE)

Minimum Qualifications for SMWB recognition:

- SBE-Certified (even MBEs and WBEs)
- ***Local office or local equipment yard***

Good Faith Effort Plan (GFEP) FAQs

- **Q: Is the 20% SMWB goal mandatory?**
A: No, but we ask prime contractors to do their best with good faith outreach efforts. If the goal is not met, proof of outreach efforts is required with the submittal.
- **Q: What if I am having trouble finding SMWB subcontractors?**
A: Please email the SMWB Program Manager with the scopes of work you are seeking. You will receive lists of local SMWB-certified firms to contact.
- **Q: What if my business is SMWB-certified? Do I need to find SMWB subs?**
A: If your firm is SMWB-certified, you will most likely meet the goal. However, the GFEP is a required document, and a good faith outreach effort is still necessary.
- **Q: Do I need to include all my subcontractors in the GFEP or just those that qualify towards the SMWB goal?**
A: All subcontractors need to be included in the GFEP, even those that may not count towards the SMWB goal.
- **Q: What if I have questions about the GFEP?**
A: Please contact the SMWB Program Manager at 210-233-3420, or at Marisol.Robles@saws.org. GFEP questions can be asked at any time before the submittal is due.

Post Award: Subcontractor Payment & Utilization Reporting (S.P.U.R.) System

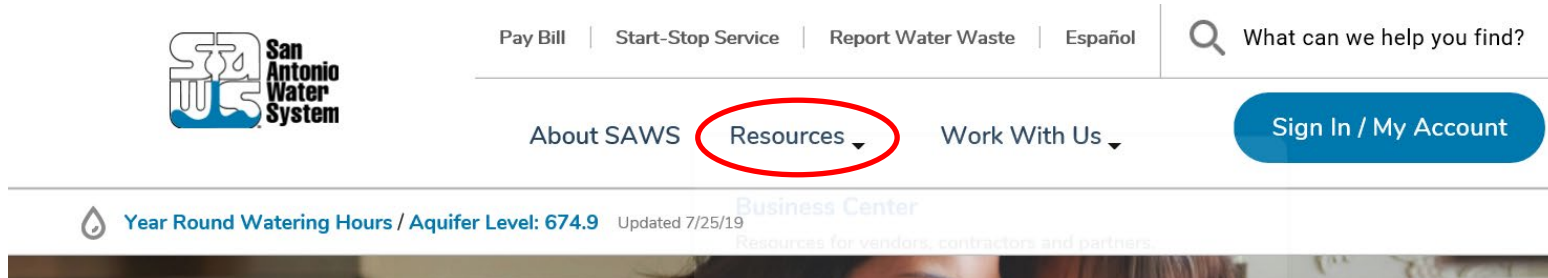
1. Subcontractor & Supplier Payment Tracking
2. Subcontractor and Supplier Additions or Substitutions
3. LCP Tracker
4. Must be Current and Accurate before Retainage is released

<https://saws.smwbe.com>



Contract Solicitations Website – Recent Changes

- To locate the Contract Solicitations website choose Resources



- At the drop down menu choose Contract Solicitations



Contract Solicitations Website – Recent Changes

- Choose the specific project
- The following buttons are now located under the advertisement:
 - Notify Me
 - Plan Holder's List
 - Downloads
 - Plans
 - Specs
 - Addendums
 - Geotechnical Data Report



The screenshot shows a website interface for a project advertisement. It features three main sections: a meeting notice, a notification subscription, and a plan holders list. Below these is a 'Downloads' section with two entries for 'Specifications' and 'Plans', both dated Jul. 31, 2019, and marked as requiring login for access. A red arrow from the text on the left points to the 'Notify Me' button in the screenshot.

Non-Mandatory Pre-Bid Meeting
10:00 AM, Tuesday Aug. 6, 2019
San Antonio Water System Customer Service Building, 2800 U.S. Hwy 281 N, San Antonio, Texas 78212; Conference Room CR-C145

Notify Me
Receive updates sent straight to your inbox.
[Subscribe](#)

Plan Holders List
View plan holders list.
[View List](#)

Downloads

Specifications
Jul. 31, 2019
Note: You must be logged in to access this document.

Plans
Jul. 31, 2019
Note: You must be logged in to access this document.

Vendor Registration & Notification (VRN)

- Please register through SAWS Vendor Registration Program on the SAWS website at www.saws.org to ensure access to the latest information
- To receive updates on specific projects, registered vendors must 'Subscribe' to the project by selecting the project and clicking 'Subscribe' under the Notify Me box

https://apps.saws.org/Business_Center/Contractsol/



Notify Me

Receive updates sent straight to your inbox.



Subscribe

Key Reminders

- All questions should be sent in writing to the corresponding Contract Administrator by email or fax
- Please identify the project by its associated solicitation number
- Contractors should not contact the SAWS project engineer, the consultants for this project, or any other SAWS staff up until Board award
- Late bids will not be accepted, and will be returned unopened
- Due to the COVID-19 emergency and to protect the health of the public, SAWS is implementing new procedures for the submission of bids
- Bids will be received either Electronically or through Sealed bids
- Electronic bids will be received via the secure SAWS FTP site
- Sealed bids will be received by Contract Administration, 2800 U.S. Hwy 281 North, Tower II, Customer Center Building, via a drop box located on the left wall when walking through the first set of double glass doors of the main Tower II entry on the north side of the building
- If bids will be delivered in person to SAWS, Bidders should allow sufficient travel time

IFB Schedule

Questions Due

Thursday – October 21, 2021 –
4:00 PM (CT)

Bids Due

Thursday – November 9, 2021 –
10:00 AM (CT)

Answers Posted

Friday – October 29, 2021 –
4:00 PM (CT)

Board Award

December
2021

Bid Packet Preparation

- Utilize the Bid Packet Checklist within the specifications
 - All items due with the bid
- Double check all mathematical calculations and verify all extensions
- Addendums are acknowledged on the Bid Proposals
- Ensure Mobilization & Prep ROW Line Item does not exceed the percentage allowed
- References and contact information must be verified prior to submitting bid(s)
- A Baseline Schedule should be part of the Bid Packet with an assumed NTP date of **January 11, 2022**

Contract Requirements

Prevailing Wage Rate and Labor Standards – Section 2.10 of the General Conditions

- Certified payroll to be submitted on weekly basis
- Wage decisions are included within the specifications
- Contractors to utilize LCP Tracker
- Site visits are random and unannounced
- Interviews will be Conducted and will be private & confidential
- Payroll records are subject to review
- All apprenticeship programs will need to be approved by Department of Labor prior to starting
- Contractors are responsible for sub-contractor payroll
- Late payrolls delay contractor payments from SAWS

Contract Requirements

- Insurance requirements are found in Section 5.7 of the GCs
 - Pollution Liability & Installation Floater is required
 - Maintain insurance coverage during the construction of this Project
- Compliant prior to executing the contract
- Will ask for insurance prior to Board award to expedite execution of the contract
 - Any deficiencies must be corrected prior to Board award

Contact Information

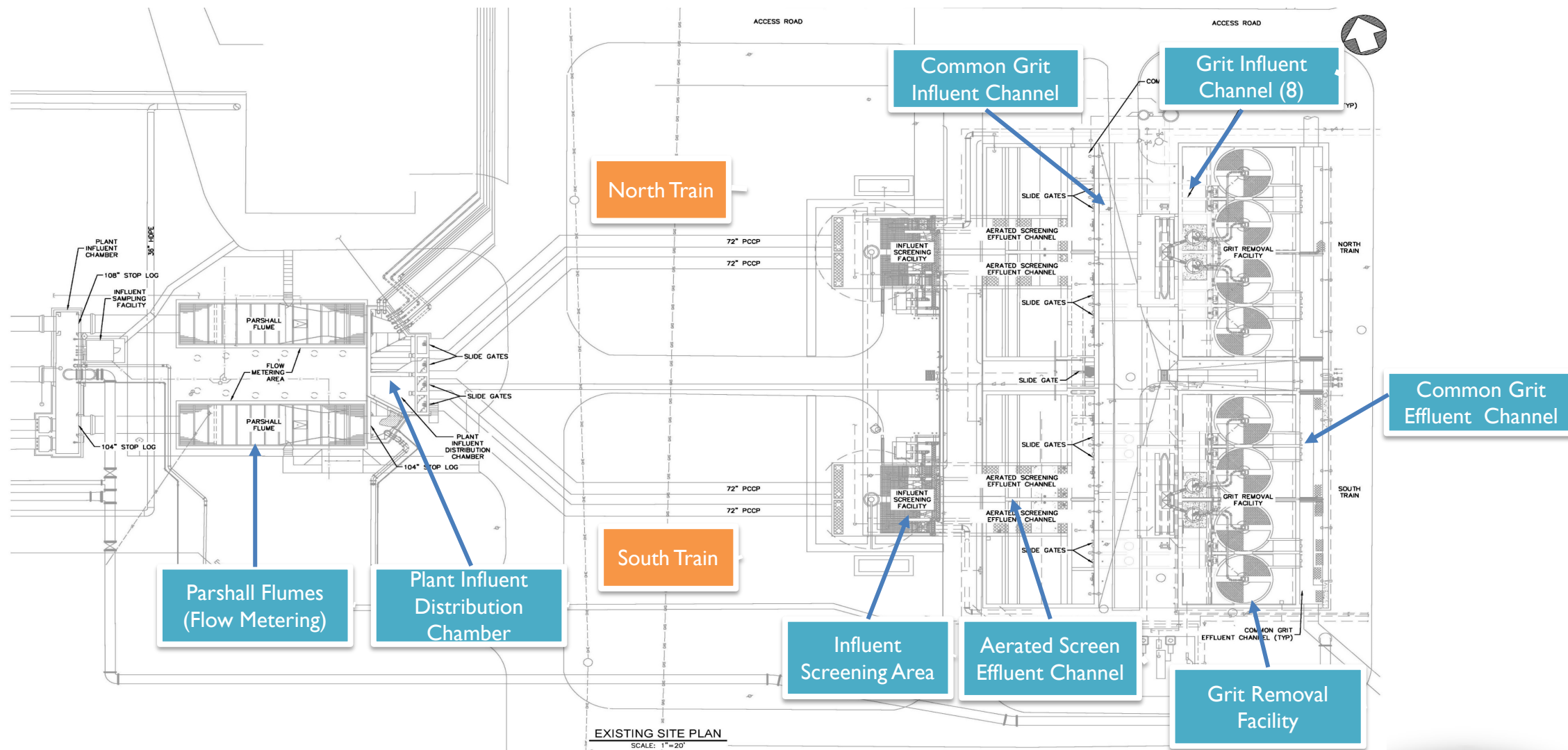
Contact Name	Title	Telephone Number	Email address
Stella Manzello	Contract Administrator	210-233-3854	Stella.Manzello@saws.org
Marisol V. Robles	SMWVB Program Manager	210-233-3420	Marisol.Robles@saws.org

Project Outline

- Project Improvements
 - ✓ Existing Site Plan
 - ✓ Proposed Site Plan
 - ✓ Demolition Plan
 - ✓ Structural & Mechanical Improvements
- Electrical & Instrumentation
- Equipment Suppliers/Vendors
- Suggested Construction Phasing
- Supplemental Conditions
- Special Conditions
- Open Comments



Existing Site Plan



Project Scope

1. Install two (2) new slide gates upstream of Parshall Flumes (Flow Metering Facility)
2. Automate existing slide gates downstream of Parshall Flumes (Flow Metering Facility)
3. Grout areas upstream of influent screening facility to provide proportional flow split
4. Extend concrete walls in effluent aerated screen effluent channels
5. Install baffles in grit influent channels
6. Retrofit existing Pista Grit Chambers to incorporate
 - a) V-Force baffles
 - b) Grit fluidizing vanes
 - c) Grit drive assembly

Project Scope

7. Remove and replace self-priming grit pumps
8. Remove and replace existing grit washer / classifier units, associated piping, and control panels
9. Remove and replace grit system drain lines
10. Remove and replace non-potable water (NPW) piping
11. Retrofit existing grit roll-off box canopies by providing new bracing

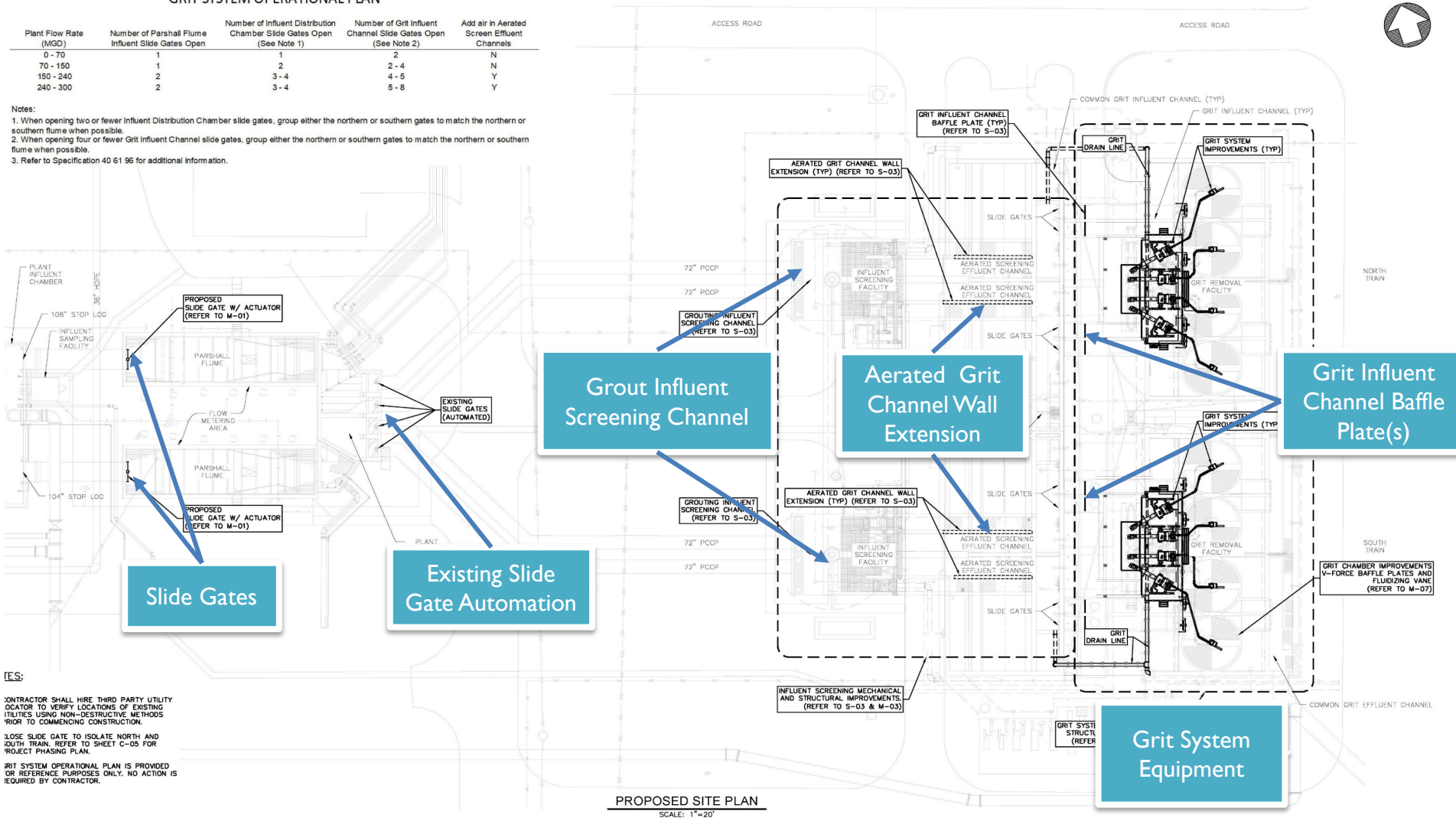
Site Plan

GRIT SYSTEM OPERATIONAL PLAN

Plant Flow Rate (MGD)	Number of Parshall Flume Influent Slide Gates Open	Number of Influent Distribution Chamber Slide Gates Open (See Note 1)	Number of Grit Influent Channel Slide Gates Open (See Note 2)	Add Air In Aerated Screen Effluent Channels
0 - 70	1	1	2	N
70 - 150	1	2	2-4	N
150 - 240	2	3-4	4-5	Y
240 - 300	2	3-4	5-8	Y

Notes:

- When opening two or fewer Influent Distribution Chamber slide gates, group either the northern or southern gates to match the northern or southern flume when possible.
- When opening four or fewer Grit Influent Channel slide gates, group either the northern or southern gates to match the northern or southern flume when possible.
- Refer to Specification 40 61 96 for additional information.

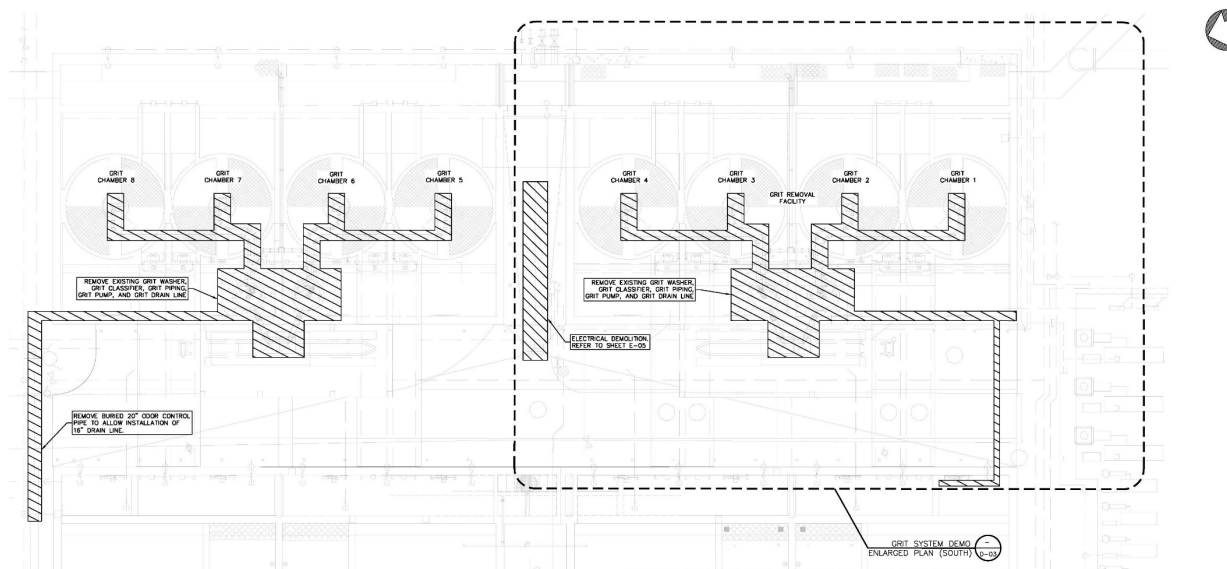


NOTES:

- CONTRACTOR SHALL HIRE THIRD PARTY UTILITY LOCATOR TO VERIFY LOCATIONS OF EXISTING UTILITIES USING NON-DESTRUCTIVE METHODS PRIOR TO COMMENCING CONSTRUCTION.
- LOSE SLIDE GATE TO ISOLATE NORTH AND SOUTH TRAIN. REFER TO SHEET C-05 FOR PROJECT PHASING PLAN.
- GRIT SYSTEM OPERATIONAL PLAN IS PROVIDED FOR REFERENCE PURPOSES ONLY. NO ACTION IS REQUIRED BY CONTRACTOR.

PROPOSED SITE PLAN
SCALE: 1"=20'

Demolition Plan



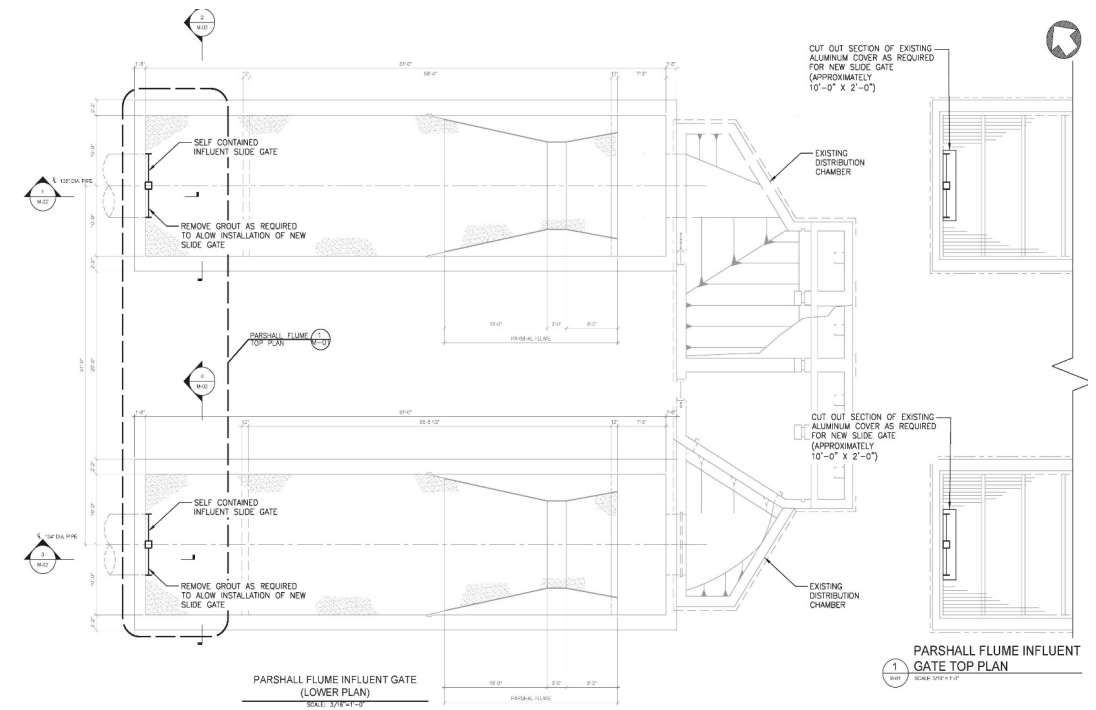
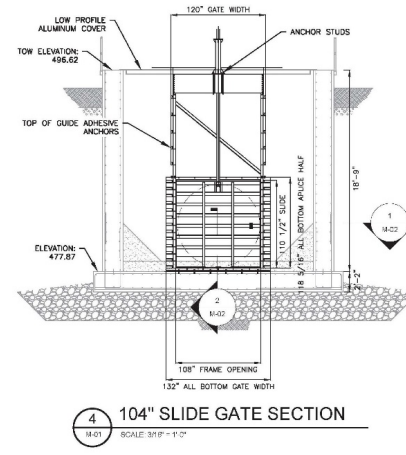
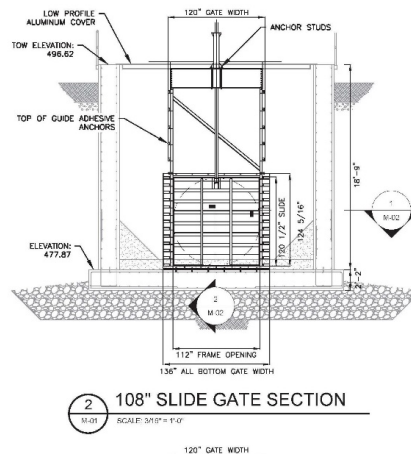
1
D-03 GRIT PUMP, PIPING, & WASHER/CLASSIFIER (NORTH CANOPY)
SCALE: NONE



2
D-03 GRIT PUMP, PIPING, & WASHER/CLASSIFIER (SOUTH CANOPY)
SCALE: NONE

Influent Gates

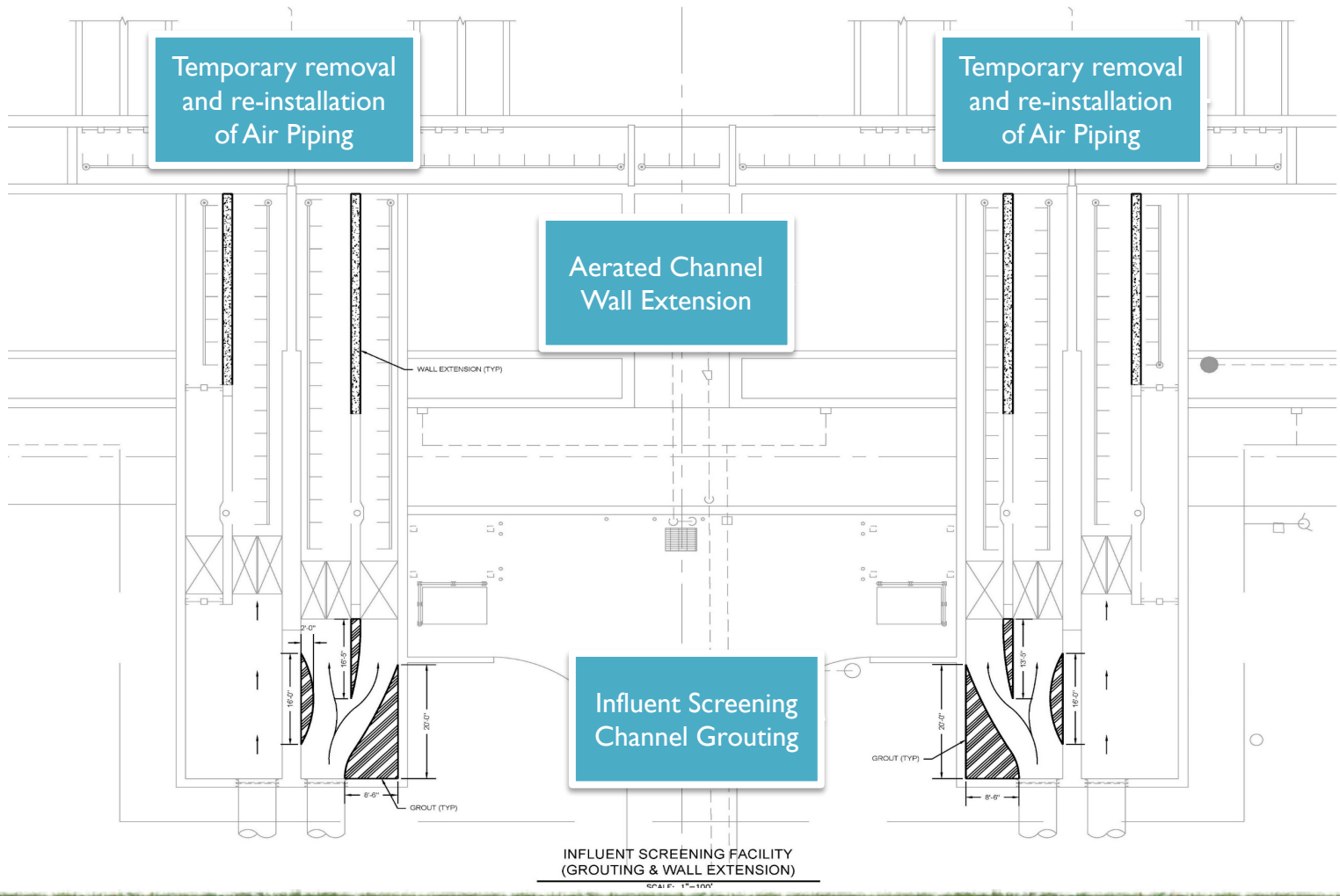
- 108-inch Influent Pipe (North Slide Gate No. 1)
- 104-inch Influent Pipe (South Slide Gate No. 2)
- 316 Stainless Steel
- Actuated Operator



Influent Gates



Influent Screen Grouting & Aerated Channel Wall Extension

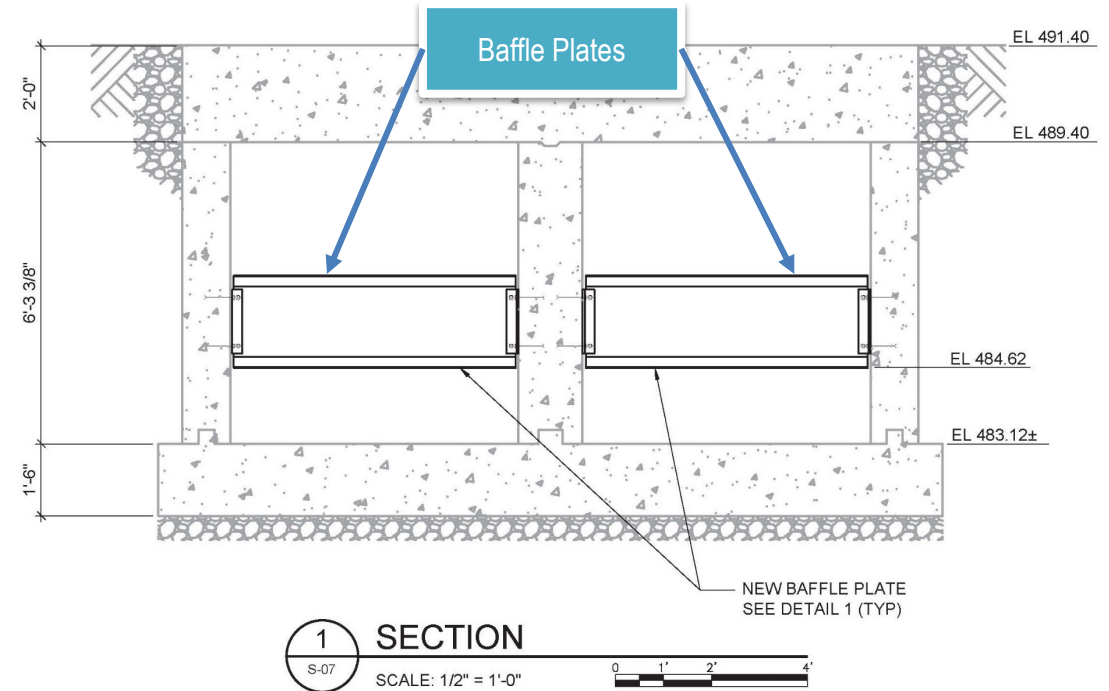
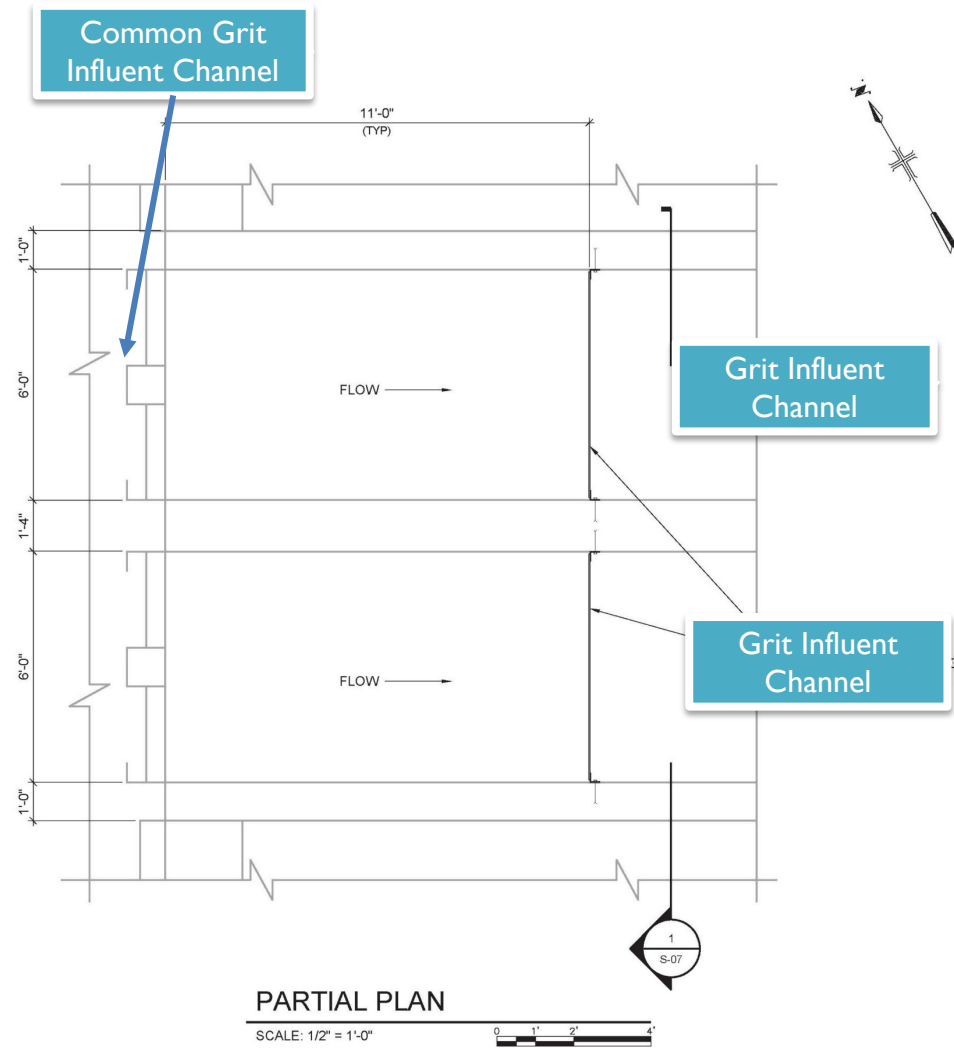


- Grout Influent Screening Channel
- Extend Aerated Channel Walls

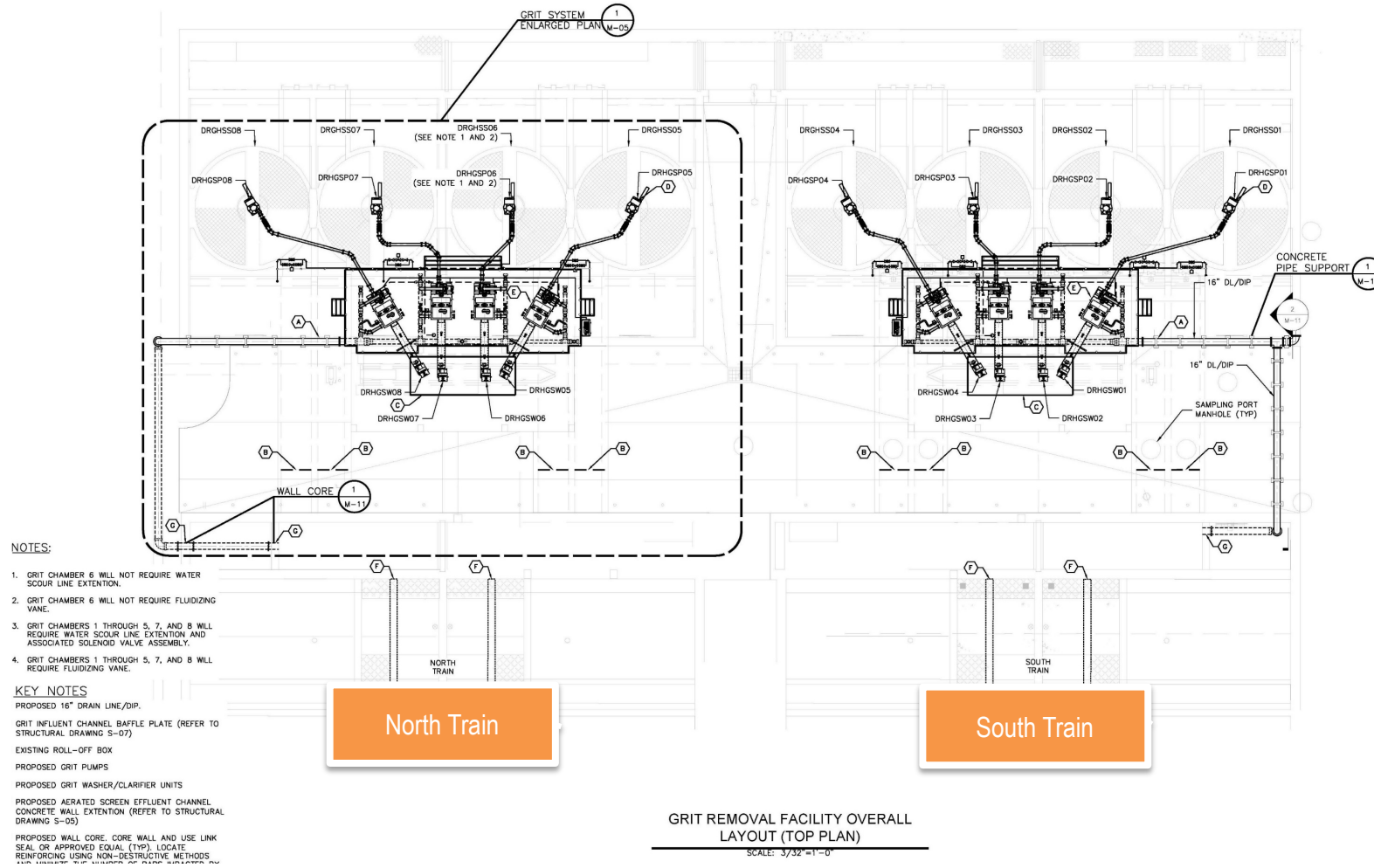


Influent Grit Channel (Baffle Plates)

- Influent Grit Channel Baffle Plate



Grit Removal System Trains



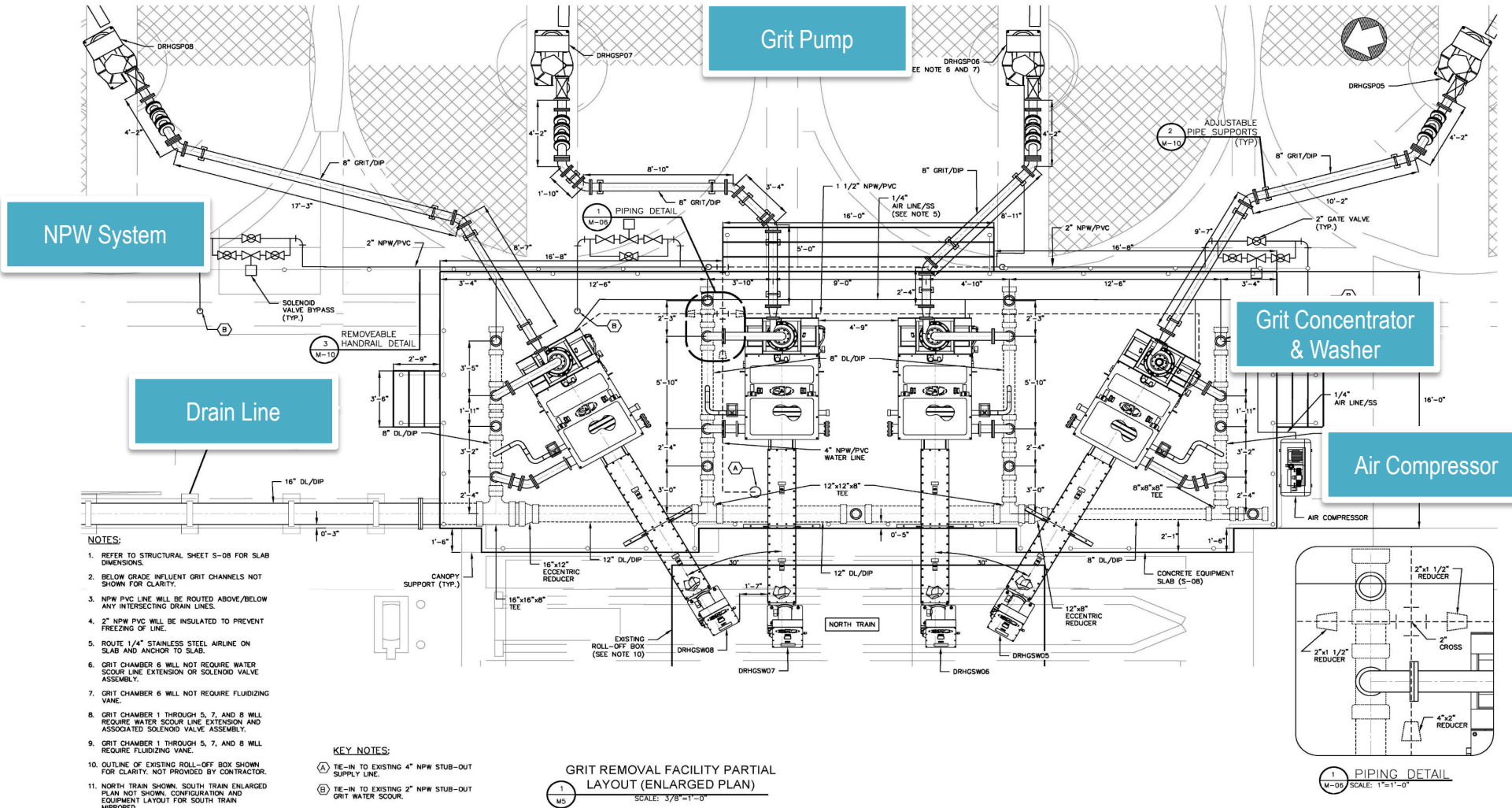
NOTES:

1. GRIT CHAMBER 6 WILL NOT REQUIRE WATER SCOUR LINE EXTENSION.
2. GRIT CHAMBER 6 WILL NOT REQUIRE FLUIDIZING VANE.
3. GRIT CHAMBERS 1 THROUGH 5, 7, AND 8 WILL REQUIRE WATER SCOUR LINE EXTENSION AND ASSOCIATED SOLENOID VALVE ASSEMBLY.
4. GRIT CHAMBERS 1 THROUGH 5, 7, AND 8 WILL REQUIRE FLUIDIZING VANE.

KEY NOTES

- PROPOSED 16" DRAIN LINE/DIP.
- GRIT INFLUENT CHANNEL BAFFLE PLATE (REFER TO STRUCTURAL DRAWING S-07)
- EXISTING ROLL-OFF BOX
- PROPOSED GRIT PUMPS
- PROPOSED GRIT WASHER/CLARIFIER UNITS
- PROPOSED AERATED SCREEN EFFLUENT CHANNEL
- CONCRETE WALL EXTENSION (REFER TO STRUCTURAL DRAWING S-05)
- PROPOSED WALL CORE, CORE WALL AND USE LINK SEAL OR APPROVED EQUAL (TYP). LOCATE REINFORCING USING NON-DESTRUCTIVE METHODS FOR EXISTING STRUCTURES AS PER STRUCTURAL DRAWING S-05.

Grit Removal System – North Train



- Grit Pump
- Grit Piping
- Grit Concentrator & Washer
- Air Compressor
- NPW System
- Drain Line

NOTES:

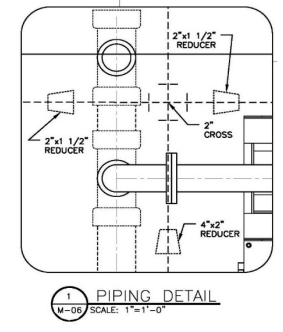
1. REFER TO STRUCTURAL SHEET S-08 FOR SLAB DIMENSIONS.
2. BELOW GRADE INFLUENT GRIT CHANNELS NOT SHOWN FOR CLARITY.
3. NPW PVC LINE WILL BE ROUTED ABOVE/BELOW ANY INTERSECTING DRAIN LINES.
4. 2\" NPW PVC WILL BE INSULATED TO PREVENT FREEZING OF LINE.
5. ROUTE 1/4\" STAINLESS STEEL AIRLINE ON SLAB AND ANCHOR TO SLAB.
6. GRIT CHAMBER 6 WILL NOT REQUIRE WATER SCOUR LINE EXTENSION OR SOLENOID VALVE ASSEMBLY.
7. GRIT CHAMBER 6 WILL NOT REQUIRE FLUIDIZING VANE.
8. GRIT CHAMBER 1 THROUGH 5, 7, AND 8 WILL REQUIRE WATER SCOUR LINE EXTENSION AND ASSOCIATED SOLENOID VALVE ASSEMBLY.
9. GRIT CHAMBER 1 THROUGH 5, 7, AND 8 WILL REQUIRE FLUIDIZING VANE.
10. OUTLINE OF EXISTING ROLL-OFF BOX SHOWN FOR CLARITY. NOT PROVIDED BY CONTRACTOR.
11. NORTH TRAIN SHOWN. SOUTH TRAIN ENLARGED PLAN NOT SHOWN. CONFIGURATION AND EQUIPMENT LAYOUT FOR SOUTH TRAIN MIRRORED.

KEY NOTES:

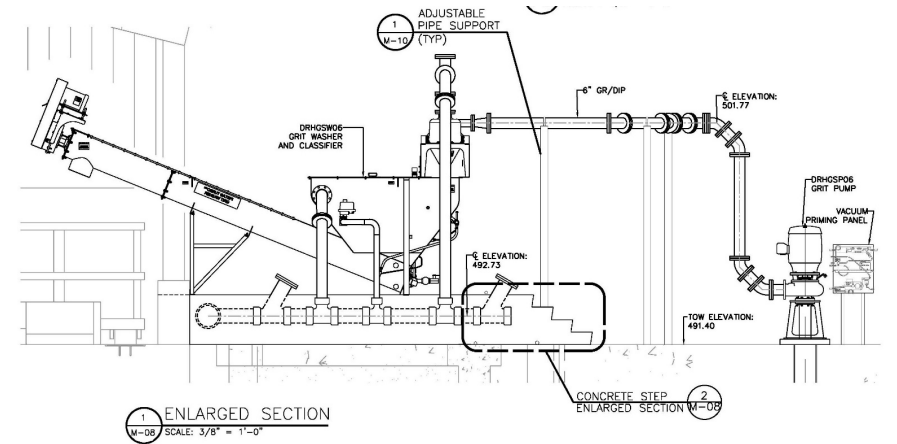
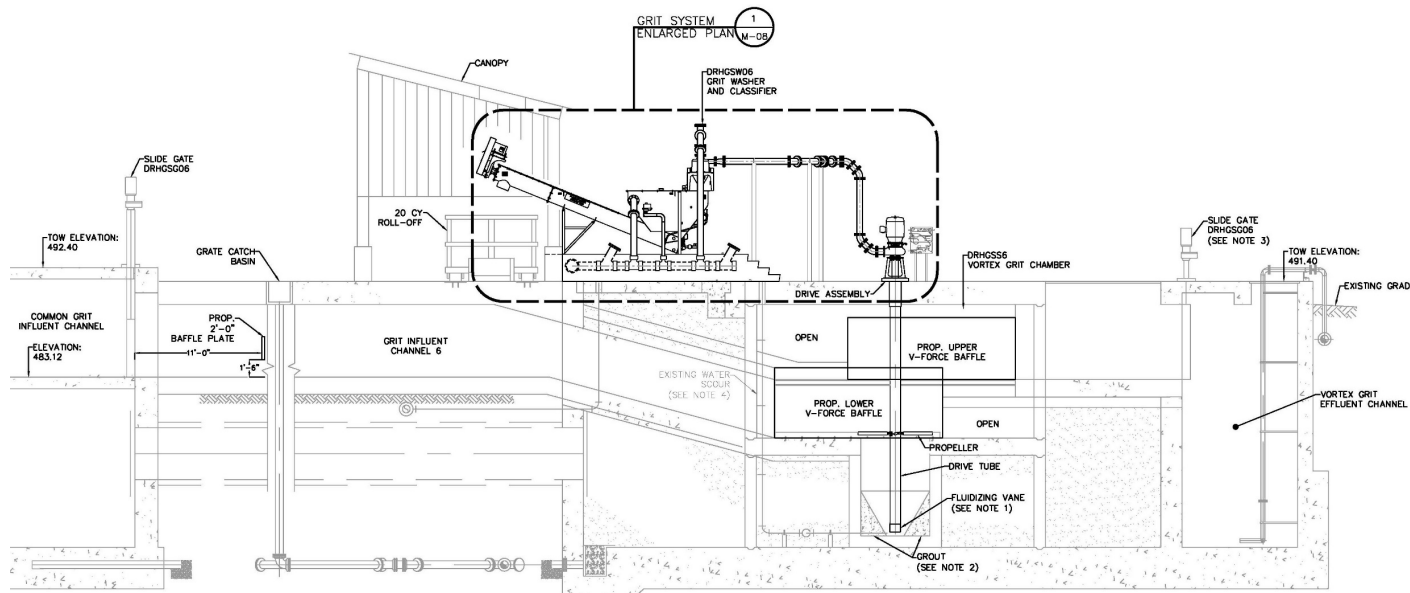
(A) TIE-IN TO EXISTING 4\" NPW STUB-OUT SUPPLY LINE.

(B) TIE-IN TO EXISTING 2\" NPW STUB-OUT GRIT WATER SCOUR.

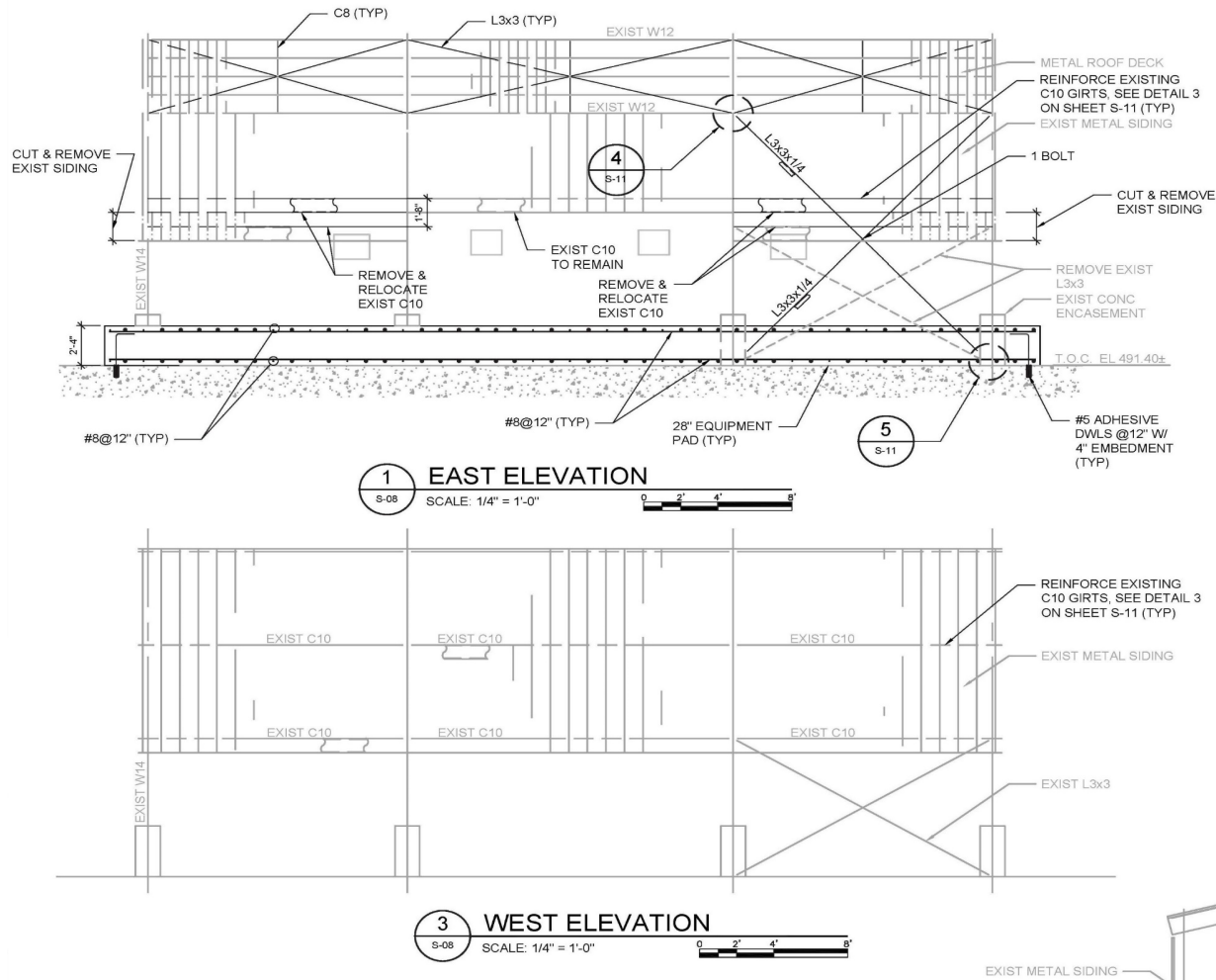
GRIT REMOVAL FACILITY PARTIAL LAYOUT (ENLARGED PLAN)
SCALE: 3/8\"=1'-0\"



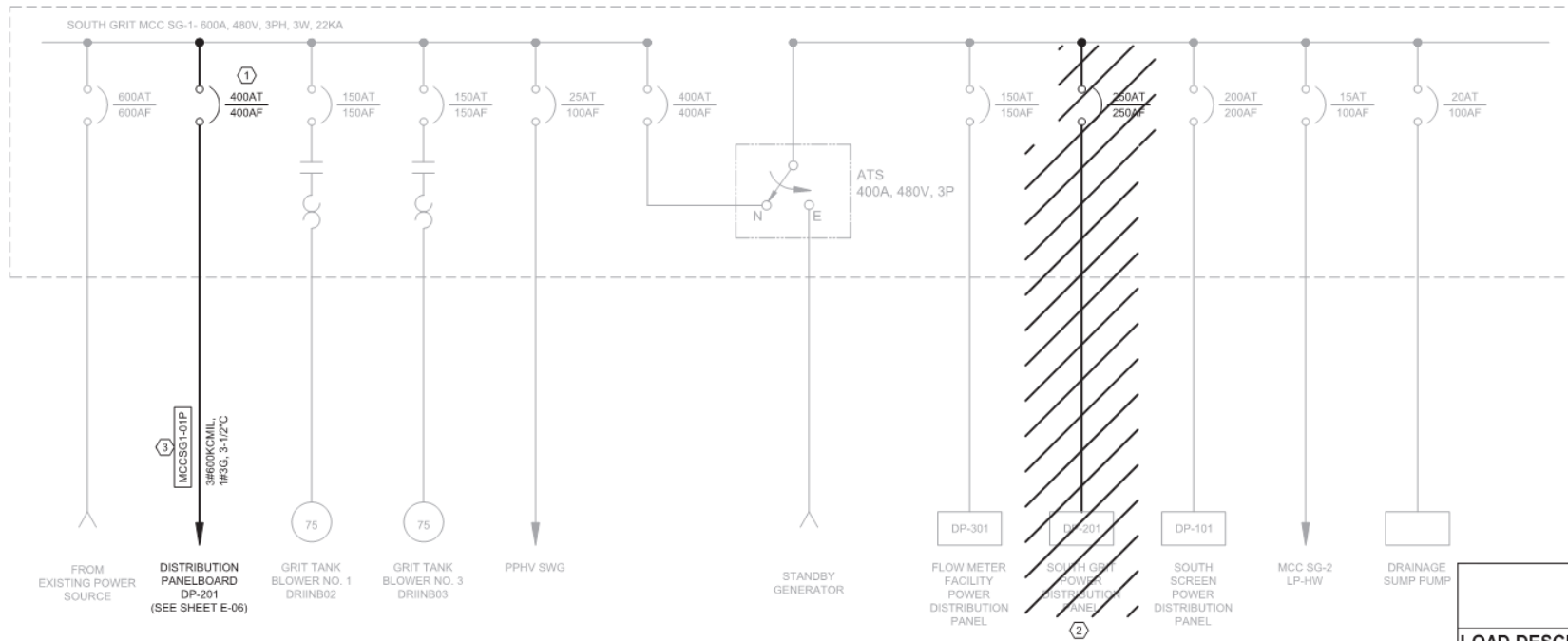
Grit Removal System – Section



Grit Roll-off Box Canopy Modifications

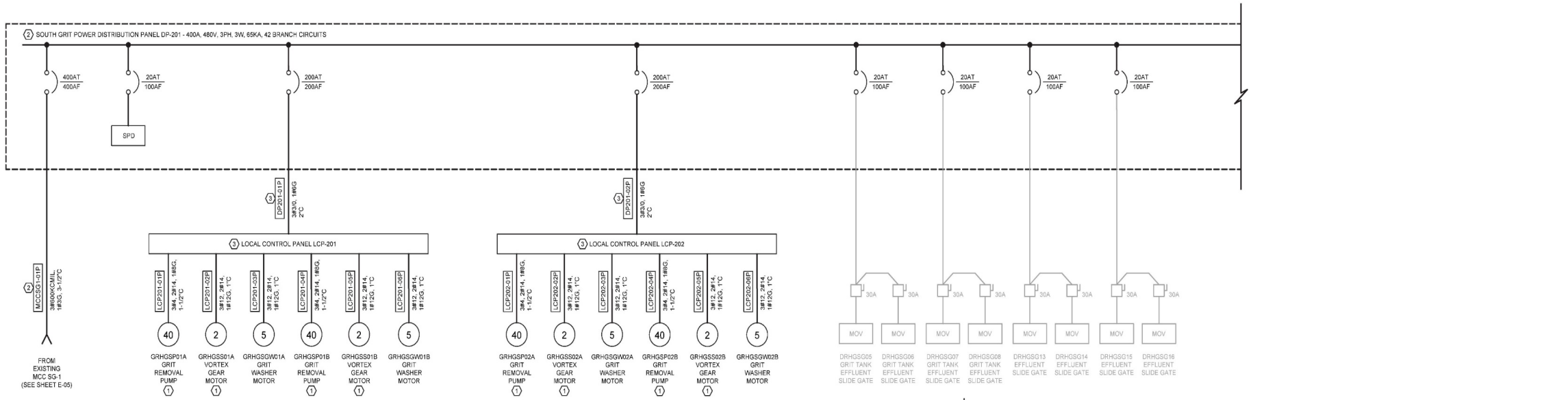


Electrical and Instrumentation & Controls

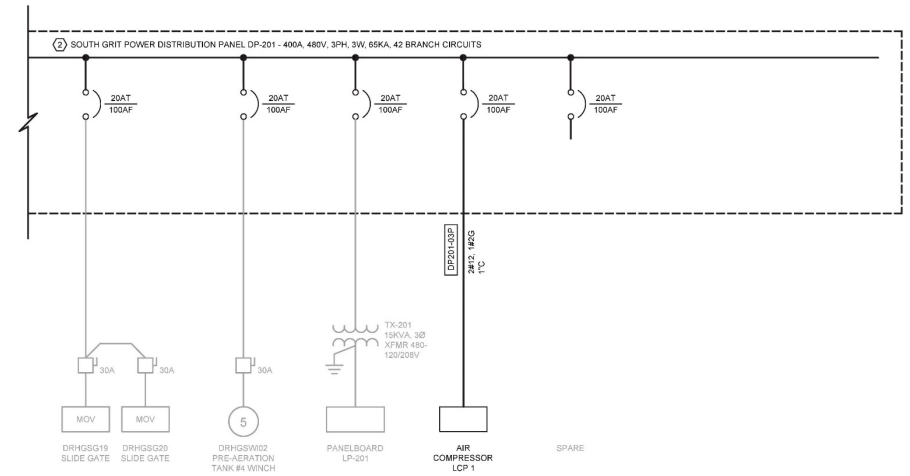


MCC SG-1 480V LOAD SUMMARY			
LOAD DESCRIPTION	KVA	HP	AMP
DISTRIBUTION PANELBOARD DP-201	256		308
GRIT TANK BLOWER NO.1		75	96
GRIT TANK BLOWER NO.3		75	96
PPHV SWG	18		22
DISTRIBUTION PANELBOARD DP-301	35		42
DISTRIBUTION PANELBOARD DP-101	80		96
MCC SG-2 LP-HW	10		12
DRAINAGE SUMP PUMP	12		14
TOTAL CONNECTED LOAD	570		686
TOTAL DEMAND LOAD (DEMAND FACTOR 75%)	427		515

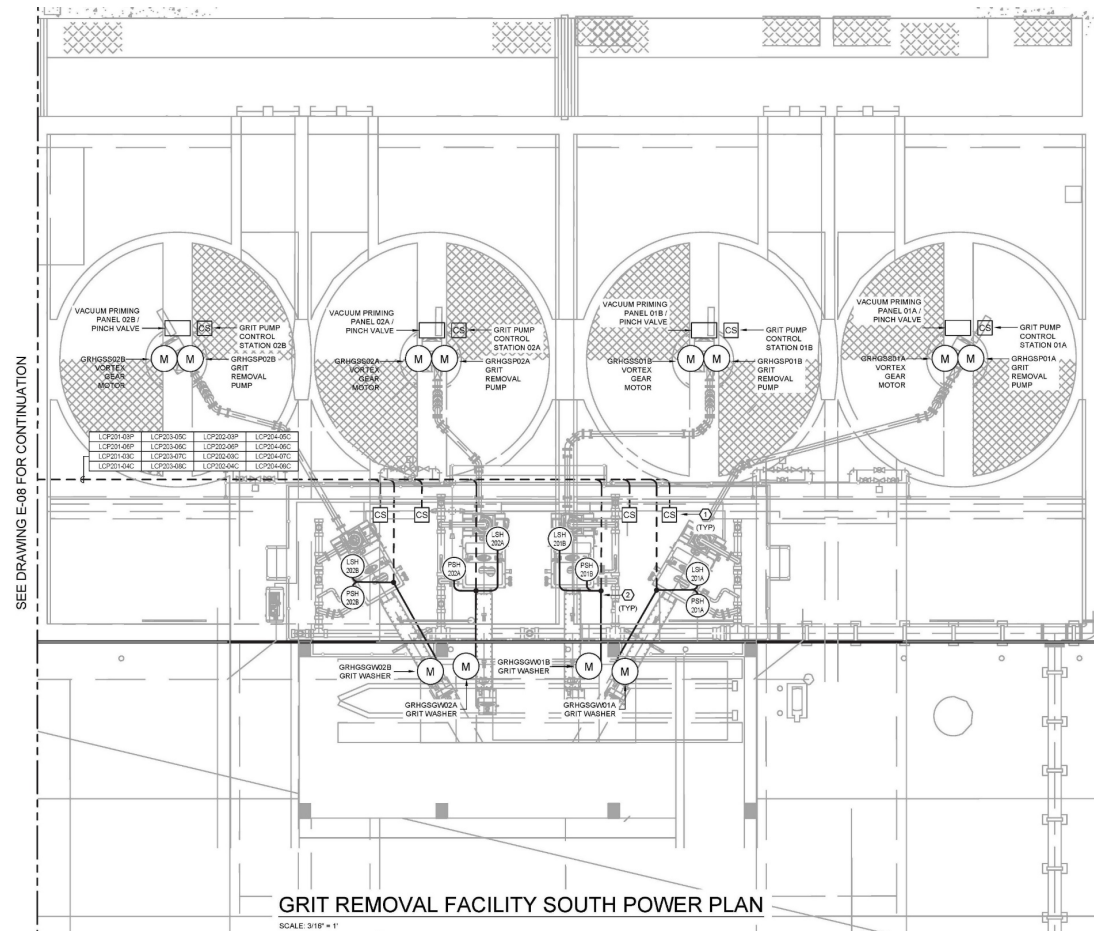
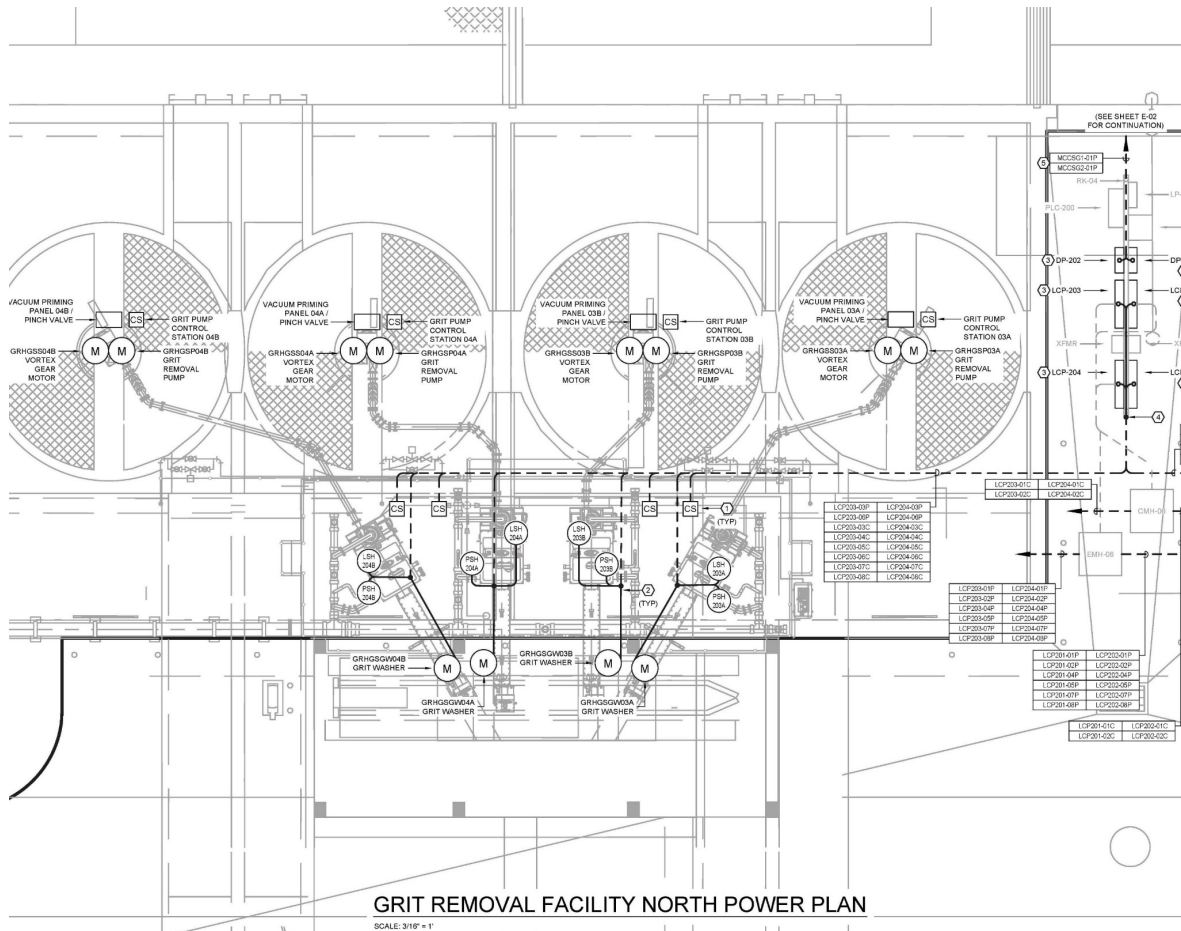
Electrical Power Distribution



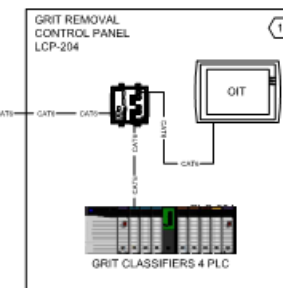
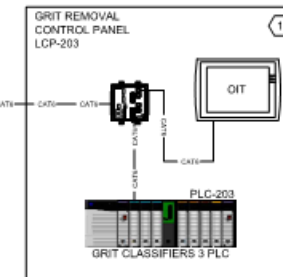
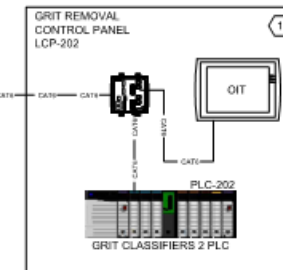
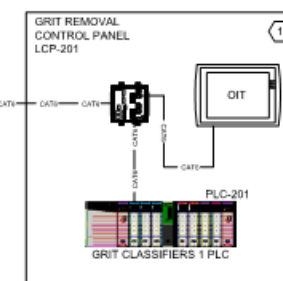
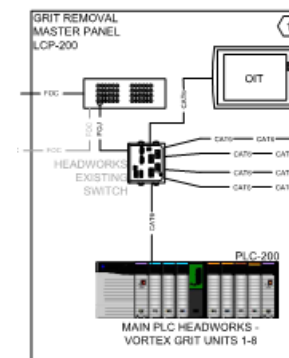
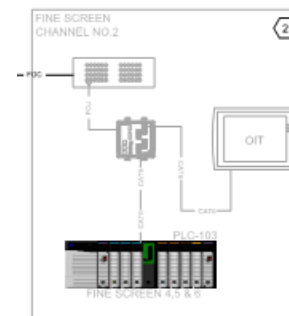
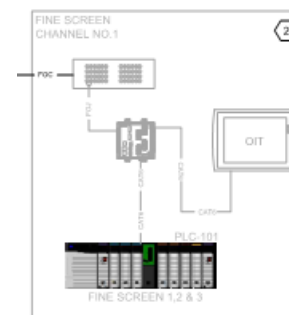
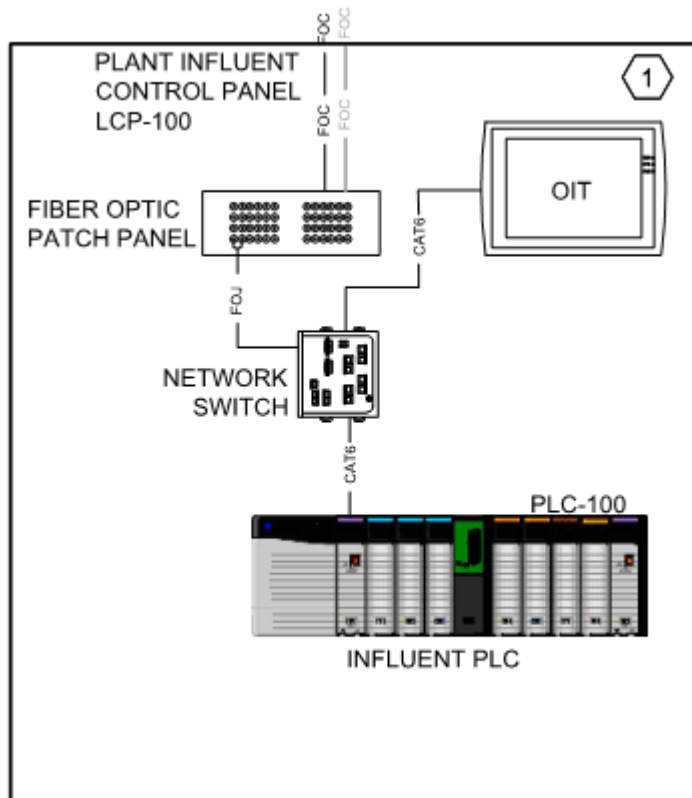
DP-201 480V LOAD SUMMARY			
LOAD DESCRIPTION	KVA	HP	AMP
LOCAL CONTROL PANEL LCP-201:			
GRIT REMOVAL PUMP GRHGSP01A		40	52
VORTEX GEAR MOTOR GRHGSS01A		2	3
GRIT WASHER MOTOR GRHGSGW01A		5	8
GRIT REMOVAL PUMP GRHGSP01B		40	52
VORTEX GEAR MOTOR GRHGSS01B		2	3
GRIT WASHER MOTOR GRHGSGW01B		5	8
LOCAL CONTROL PANEL LCP-202:			
GRIT REMOVAL PUMP GRHGSP02A		40	52
VORTEX GEAR MOTOR GRHGSS02A		2	3
GRIT WASHER MOTOR GRHGSGW02A		5	8
GRIT REMOVAL PUMP GRHGSP02B		40	52
VORTEX GEAR MOTOR GRHGSS02B		2	3
GRIT WASHER MOTOR GRHGSGW02B		5	8
SLIDE GATE DRHGSG05, DRHGSG06	3		4
SLIDE GATE DRHGSG07, DRHGSG08	3		4
SLIDE GATE DRHGSG13, DRHGSG14	3		4
SLIDE GATE DRHGSG15, DRHGSG16	3		4
SLIDE GATE DRHGSG19, DRHGSG20	3		4
PRE-AERATION TANK #4 WINCH		5	8
TX-201	15		18
AIR COMPRESSOR LCP 1	10		12
TOTAL CONNECTED LOAD	256		308



Grit Removal Power Plan



Control System



Vendor and Equipment Suppliers

Equipment	Vendor
V-Force Baffle	S&L
Fluidizing Vane	S&L
Grit Pump and Vacuum Priming Panel	S&L
Concentrator	S&L
Grit Washer	S&L
Slide Gates	Fontaine/WHIPPS
Electrical Panelboards	Eaton, Schneider Electric/Square D, General Electric
Operator Interface Terminal (OIT)	Allen Bradley
Process Control and System Integrators	Prime Controls, Richardson Logic Control, Wunderlich-Malec, Control Panel USA, Mid-Coast Electric Supply, Inc.

Suggested Construction Phasing Plan

Refer to Sheet C-05 and Spec Section 01 14 16 (Coordination with Owner's Operations) for Suggested Construction Phasing Plan

PHASE 1 (North Train)

1. Isolate North Train (Interrupt flow to North Train)
2. South Train to remain in service
3. Maintain air flow to South Aerated Screening Channels
4. Demo North Train, Install North Train Grit System, commission and start up North Train

PHASE 2 (South Train)

1. Isolate South Train (Interrupt flow to South Train)
2. North Train to remain in service
3. Air flow to North Train may remain interrupted during completion of South Train
4. Demo South Train, Install South Train Grit System, commission and start up South Train
5. Conduct Performance Testing to include North and South Train

Suggested Construction Phasing Plan

Refer to Sheet C-05 and Spec Section 01 14 16 (Coordination with Owner's Operations) for Suggested Construction Phasing Plan

PHASE 3 (Flow Metering Area North Train)

- I. Isolate North Train Parshall Flume and Install North Train Slide Gate

PHASE 4 (Flow Metering Area South Train)

- I. Isolate South Train Parshall Flume and Install South Train Slide Gate

Supplemental Conditions

- Contractor shall perform the work with its own organization on at least 40% of the total original contract price
- Detailed Baseline Schedule and Statement of Bidder's Experience must be submitted with Bid
- Liquidated Damages of \$640.00 per day

Supplemental Conditions (Cont'd)

- Project Completion and Acceptance
 - Contractor shall be entitled to receive 70% of Retainage under the following conditions:
 - Achieves substantial completion as determined by Owner
 - Grit Removal manufacture is delayed in securing a successful Performance Test as stipulated in Section 46 23 71, Paragraph 3.4. Schedule shall include a period not to exceed 45 calendar days following installation of Grit Removal Equipment for Performance Test
 - Conditional Letter of Acceptance with all punch list items completed other than the grit removal equipment passing the performance test
 - Contractor Certification indicating that all subcontractors and supplies, other than the grit removal equipment manufacturer have been paid
 - 30% remaining retainage shall be released once the performance test is successfully completed

Special Conditions

- Contractor may follow the suggested sequencing plan or submit an alternate plan to SAWS for approval
- Grit dumpsters are emptied once a month or as needed. Contractor shall manage traffic flow to prevent or delay grit dumpster replacement
- Contractor shall be responsible for restoration of all disturbed areas
- Allowances
 - Permitting
 - Subsurface Utility Engineering
 - Grit Removal System Equipment (Contractor shall issue Letter of Intent to Purchase Equipment no later than 7-days after Owner issues Notice to Proceed).
- Contractor is responsible for Stormwater Pollution Prevention Plan

QUESTIONS?

Reminder: Oral statements or discussion during the pre-bid meeting today will not be binding, nor will it change or affect the terms or conditions within the Plans and Specifications of this Project. Changes, if any, will be addressed in writing only via an Addendum.

Steven M. Clouse WRC Headworks Enhancements Phase 2 Project

Ila Drzymala, P.E.

Project Engineer

Stella Manzello

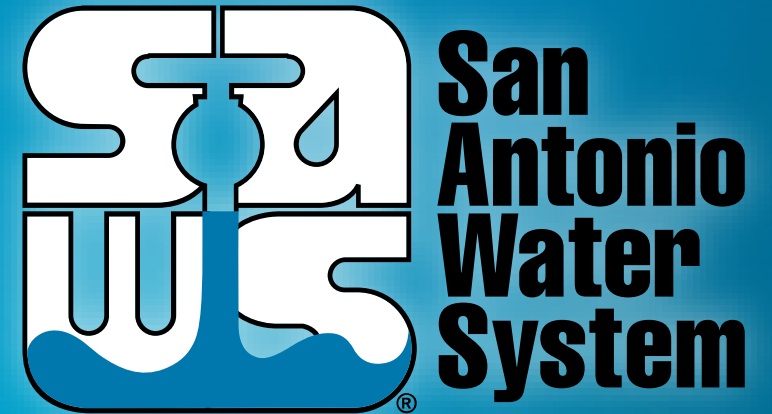
Contract Administrator

Marisol V. Robles

SMWVB Program Manager, SAWS

Javier Garcia, P.E.

Project Engineer of Record, GIC



Non- Mandatory Pre-Bid Meeting

October 18, 2021 – 2:00 PM

MAKING SAN ANTONIO
WATERFUL 